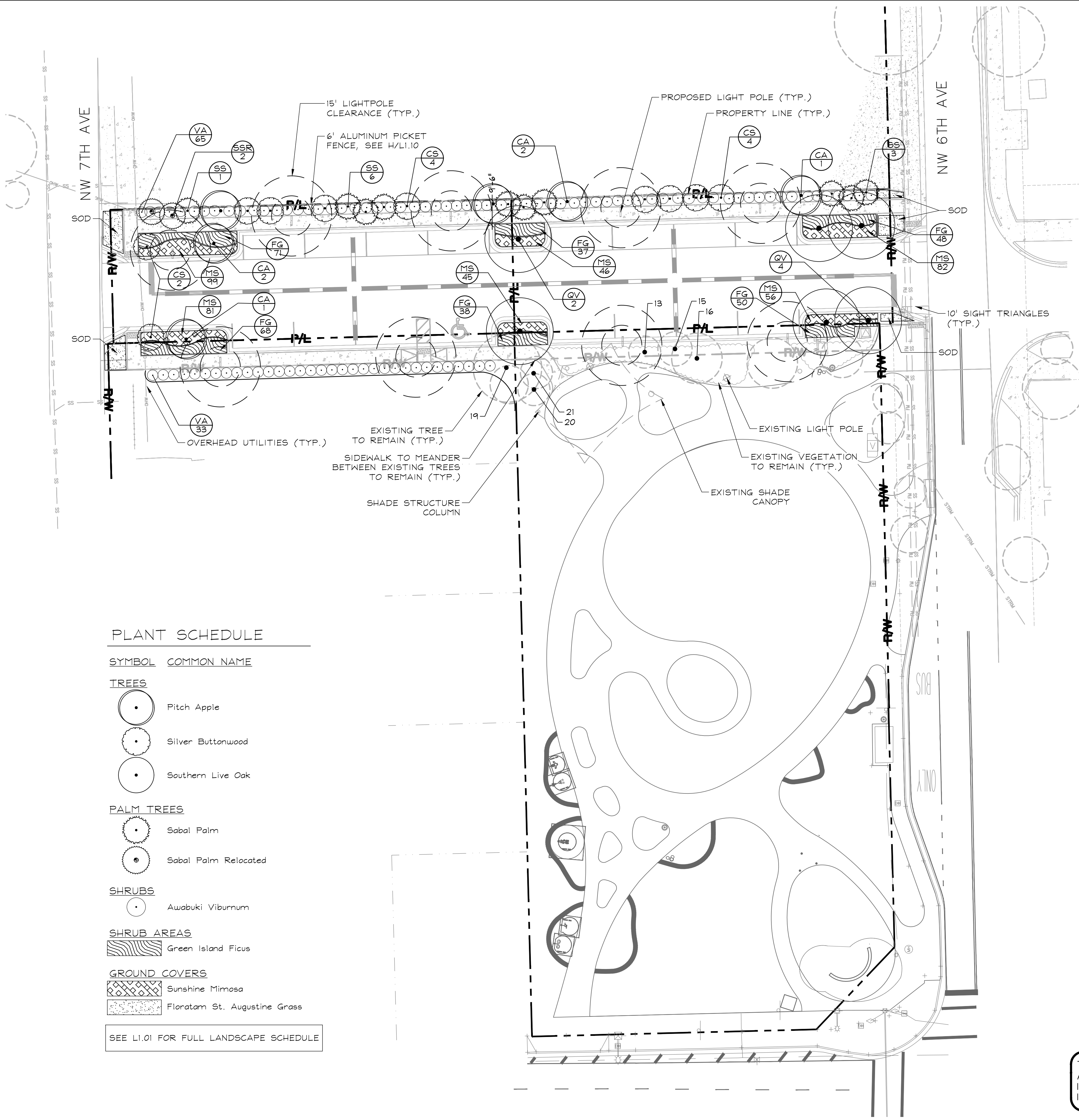


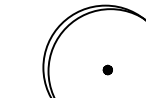

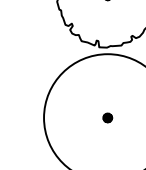
Plotted By: Webster, Brooke Sheet Set: ANNE ADDLERLY GILLIS PARKING LOT LAYOUT L1.00 LANDSCAPE PLAN August 19, 2025 04:24:45pm K:\VTL\Civil\040 Jobs\04095115 E-20-20 CRA WA#1 Gilles Parking Lot Design\CADD\PlanSheets\L1.00 LANDSCAPE PLANS.dwg  
This document, together with the concepts and designs presented herein, is intended only for the specific purpose and client for which it was prepared. Reuse of and improper reliance on this document without written authorization and adaptation by Kimley-Horn and Associates, Inc. shall be without liability to Kimley-Horn and Associates, Inc.



### PLANT SCHEDULE

SYMBOL COMMON NAME

#### TREES

-  Pitch Apple
-  Silver Buttonwood
-  Southern Live Oak

#### PALM TREES

-  Sabal Palm
-  Sabal Palm Relocated

#### SHRUBS

-  Awabuki Viburnum

#### SHRUB AREAS

-  Green Island Ficus

#### GROUND COVERS

-  Sunshine Mimosa
-  Floratan St. Augustine Grass

SEE L1.01 FOR FULL LANDSCAPE SCHEDULE

PLANS ARE IN NAVD 1988 DATUM  
CONVERSION EQUATION IS BELOW:  
(NAVD 1988) + 1.57' = (NGVD 1929)

THE PRESENCE OF GROUNDWATER SHOULD BE  
ANTICIPATED. CONTRACTOR'S BID SHALL  
INCLUDE CONSIDERATION FOR ADDRESSING THIS  
ISSUE AND OBTAINING ALL NECESSARY PERMITS.

Always call 811 two full business days before you dig to  
have underground utilities located and marked.

**Sunshine811.com**

2000033

ANNE ADDLERLY GILLIS  
PARKING LOT  
PREPARED FOR  
CITY OF POMPANO BEACH

### LANDSCAPE PLAN

KHA PROJECT  
04095115  
DATE  
AUGUST 2025  
SCALE AS SHOWN  
DESIGNED BY TVC  
DRAWN BY TVC  
CHECKED BY GB  
DATE 8/19/25

LICENSED PROFESSIONAL  
TRICIA C. RICHTER, PLA  
FL LICENSE NUMBER  
LA#6667244  
DATE 8/19/25

**Kimley»Horn**

© 2024 KIMLEY-HORN AND ASSOCIATES, INC.  
8200 EFTERS ROAD, SUITE 200, POMPANO BEACH, FL 33064  
PHONE: 954-535-5100 FAX: 954-739-2247  
WWW.KIMLEY-HORN.COM REGISTRY No. 696

No. REVISIONS DATE BY